

CATALOG CODE DX-100-X.X/X.X


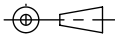
TORQUE Nm (AXIS A/AXIS B)	
	0.5/0.5
	1.0/1.0
	1.5/1.5
	0.5/1.5
	1.5/0.5
	0.3/0.3

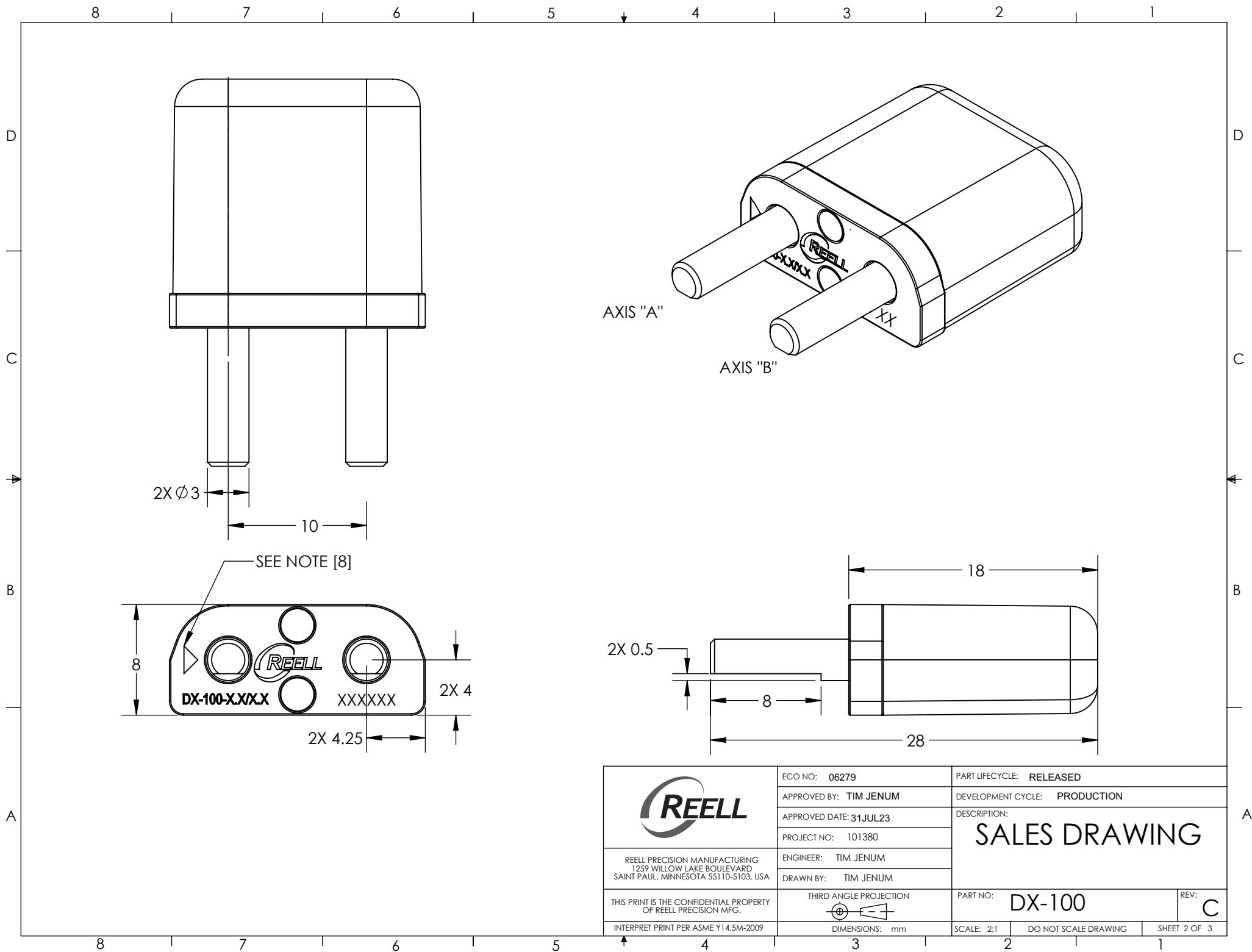
NOTES:


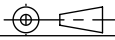
1. USER MUST DETERMINE FITNESS FOR USE IN APPLICATION.
2. ENVIRONMENTAL CONDITIONS: -20°C to 80°C.
3. PRODUCT TORQUE SPECIFICATION: DYNAMIC TORQUE $\pm 20\%$ OF NOMINAL
4. LIFE: 50,000 CYCLES.
ONE CYCLE CONSISTS OF 90° CW AND 90° CCW AT 10% DUTY CYCLE FOR SPEEDS LESS THAN 100 RPM.
5. FINISH:
NON-COSMETIC.
6. CUSTOMER IS RESPONSIBLE FOR CHECKING COMPATIBILITY OF REELL LUBRICANTS WITH PLASTICS USED.
7. MATERIALS:
BRACKET = ZINC, PLATED
FRONT PLATE = STAINLESS STEEL
SHAFT = STEEL
TORQUE ELEMENTS = STEEL
LUBRICATION = MINERAL BASED
- [8]. THE ARROW IS A DESIGNATOR OF WHICH AXIS IS THE HIGHER TORQUE IN AN ASSEMBLY THAT HAS A DIFFERENT TORQUE VALUE IN EACH AXIS. THE ARROW IS NOT PRESENT IN ASSEMBLIES THAT HAVE THE SAME TORQUE IN AXIS "A" AND "B"

FOR PATENTS SEE:
pat.reell.com (PRODUCT CODE: CP10)

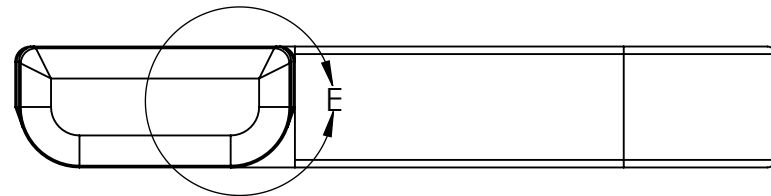
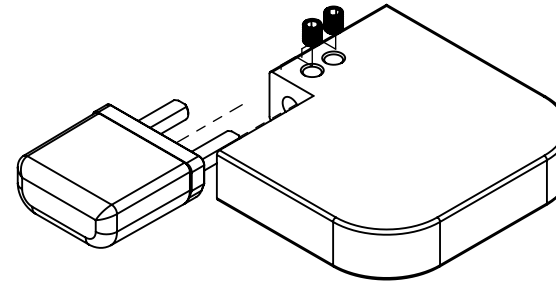
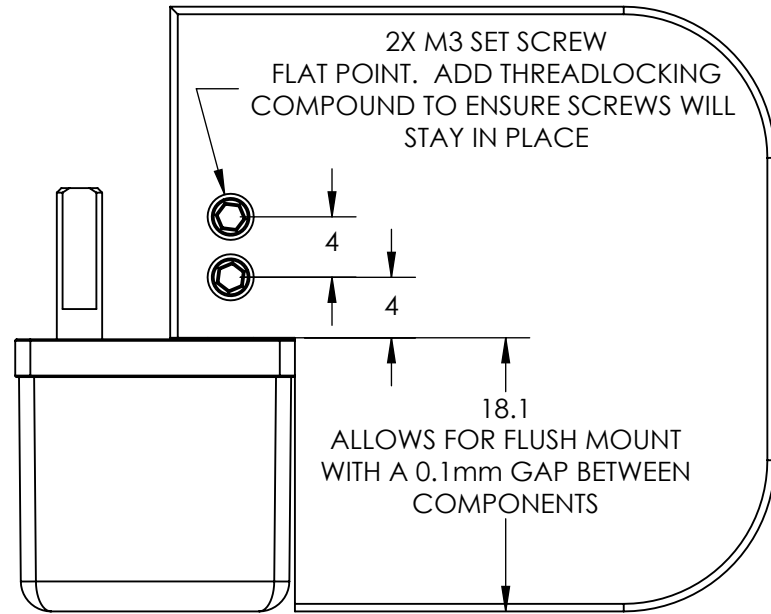
SPECIFICATIONS SUBJECT TO CHANGE

	ECO NO: 06279	PART LIFECYCLE: RELEASED			
	APPROVED BY: TIM JENUM	DEVELOPMENT CYCLE: PRODUCTION			
	APPROVED DATE: 31JUL23	<h2>SALES DRAWING</h2>			
	PROJECT NO: 101380				
REELL PRECISION MANUFACTURING 1259 WILLOW LAKE BOULEVARD SAINT PAUL, MINNESOTA 55110-5103, USA	ENGINEER: TIM JENUM	PART NO: DX-100 REV: C			
THIS PRINT IS THE CONFIDENTIAL PROPERTY OF REELL PRECISION MFG.	DRAWN BY: TIM JENUM				
INTERPRET PRINT PER ASME Y14.5M-2009	THIRD ANGLE PROJECTION 	DIMENSIONS: mm	SCALE: 2:1	DO NOT SCALE DRAWING	SHEET 1 OF 3

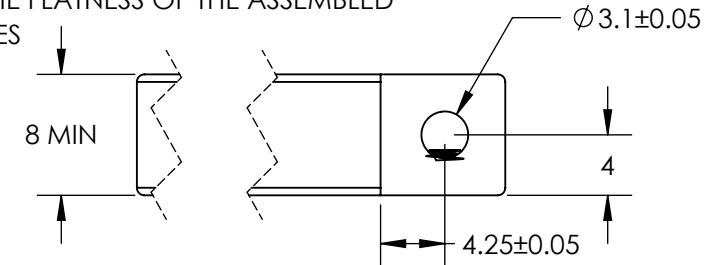


	ECO NO: 06279	PART LIFECYCLE: RELEASED		
	APPROVED BY: TIM JENUM	DEVELOPMENT CYCLE: PRODUCTION		
	APPROVED DATE: 31JUL23	DESCRIPTION: SALES DRAWING		
	PROJECT NO: 101380			
REELL PRECISION MANUFACTURING 1259 WILLOW LAKE BOULEVARD SAINT PAUL, MINNESOTA 55110-5103, USA	ENGINEER: TIM JENUM	PART NO: DX-100		
THIS PRINT IS THE CONFIDENTIAL PROPERTY OF REELL PRECISION MFG.	DRAWN BY: TIM JENUM			REV: C
INTERPRET PRINT PER ASME Y14.5M-2009	THIRD ANGLE PROJECTION 	SCALE: 2:1	DO NOT SCALE DRAWING	SHEET 2 OF 3

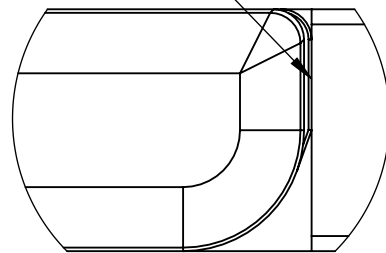
MOUNTING RECOMMENDATIONS



POSITION OF CENTERLINE OF THE HOLE
TO INDICATED SURFACE IS IMPORTANT
TO THE FLATNESS OF THE ASSEMBLED
PLATES



CONTACT RELATIONSHIP BETWEEN THE HINGE
AND THE PLATE. THIS PROVIDES THE STOP TO
THE TRAVEL OF THE PLATE AND SETS THE ANGLE.
TOLERANCE VARIATION MAY AFFECT ANGLE



DETAIL E
SCALE 4 : 1

	ECO NO: 06279	PART LIFECYCLE: RELEASED	
	APPROVED BY: TIM JENUM	DEVELOPMENT CYCLE: PRODUCTION	
	APPROVED DATE: 31JUL23	DESCRIPTION:	
	PROJECT NO: 101380	SALES DRAWING	
REELL PRECISION MANUFACTURING 1259 WILLOW LAKE BOULEVARD SAINT PAUL, MINNESOTA 55110-5103, USA	ENGINEER: TIM JENUM		
	DRAWN BY: TIM JENUM		
THIS PRINT IS THE CONFIDENTIAL PROPERTY OF REELL PRECISION MFG.	THIRD ANGLE PROJECTION	PART NO: DX-100	REV: C
		SCALE: 2:1	DO NOT SCALE DRAWING
INTERPRET PRINT PER ASME Y14.5M-2009	DIMENSIONS: mm		SHEET 3 OF 3