

CATALOG CODE

TI-140-X.X-XX

| TORQUE Nm |
|-----------|
| - 1.4 |
| - 1.8 |
| - 2.2 |
| - 2.6 |
| - 3.0 |
| - 3.4 |
| - 3.8 |
| - 4.2 |

| FINS NO. |
|----------|
| - 01 |
| - 02 |

NOTES:

1. APPLICATION CONDITIONS REFERENCE USER MUST DETERMINE FITNESS FOR USE IN APPLICATION.
2. LIFE: 25,000 CYCLES.
ONE CYCLE = 120° OPEN/120° CLOSED.
FIVE(5) CYCLES PER MINUTE MAX.
3. MATERIAL:
BRACKET AND SHAFT END ARE ENGINEERED PLASTIC
SHAFT AND TORQUE ELEMENT ARE HARDENED STEEL
4. TABS ON HINGE TO BE ALIGNED AS SHOWN ±5°.
5. STATIC TORQUE IS NORMALLY WITHIN 10% OF DYNAMIC TORQUE.



REELL PRECISION MANUFACTURING
1259 WILLOW LAKE BOULEVARD
SAINT PAUL, MINNESOTA 55110-5103, USA

THIS PRINT IS THE CONFIDENTIAL PROPERTY OF REELL PRECISION MFG.

INTERPRET PRINT PER ASME Y14.5M-2009

ECO NO: 04648

APPROVED BY: BOB WAHLSTEDT

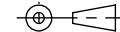
APPROVED DATE: 11 FEB22

PROJECT NO: 0

ENGINEER: BOB WAHLSTEDT

DRAWN BY: CURT POTTER

THIRD ANGLE PROJECTION



DIMENSIONS: mm

PART LIFECYCLE: RELEASED

DEVELOPMENT CYCLE: PRODUCTION

DESCRIPTION:

SALES DRAWING

PART NO: TI-140

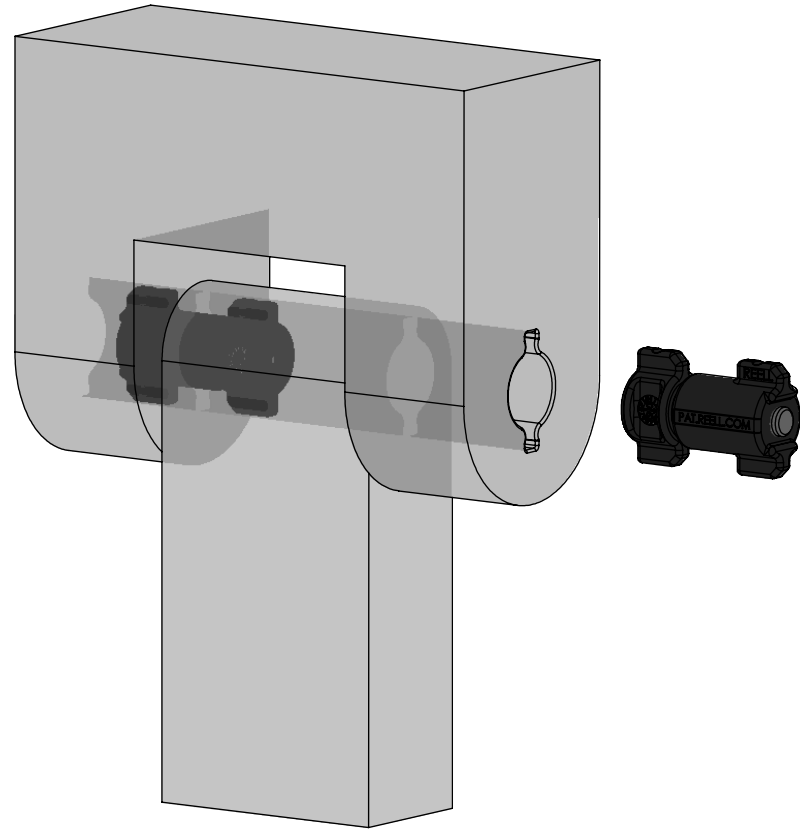
REV: P


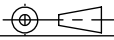
SCALE: 1:1 DO NOT SCALE DRAWING

SHEET 1 OF 5

SPECIFICATIONS SUBJECT TO CHANGE

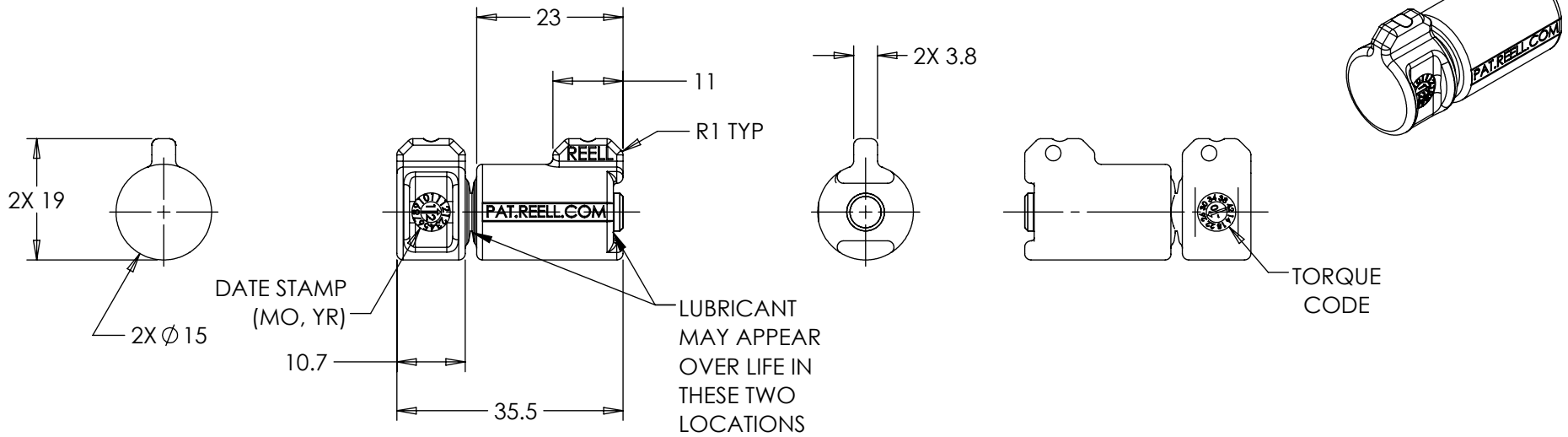
| CATALOG CODE | | TORQUE CODE | DYNAMIC TORQUE Nm |
|---------------|---------------|-------------|-------------------|
| ONE FIN | TWO FINS | | |
| TI-140-1.4-01 | TI-140-1.4-02 | 14 | 1.4±0.42 |
| TI-140-1.8-01 | TI-140-1.8-02 | 18 | 1.8±0.45 |
| TI-140-2.2-01 | TI-140-2.2-02 | 22 | 2.2±0.44 |
| TI-140-2.6-01 | TI-140-2.6-02 | 26 | 2.6±0.52 |
| TI-140-3.0-01 | TI-140-3.0-02 | 30 | 3.0±0.60 |
| TI-140-3.4-01 | TI-140-3.4-02 | 34 | 3.4±0.68 |
| TI-140-3.8-01 | TI-140-3.8-02 | 38 | 3.8±0.76 |
| TI-140-4.2-01 | TI-140-4.2-02 | 42 | 4.2±0.84 |



| | | | |
|--|---|-------------------------------|----------------------|
|  | ECO NO: 04648 | PART LIFECYCLE: RELEASED | |
| | APPROVED BY: BOB WAHLSTEDT | DEVELOPMENT CYCLE: PRODUCTION | |
| | APPROVED DATE: 11 FEB22 | SALES DRAWING | |
| | PROJECT NO: 0 | | |
| REELL PRECISION MANUFACTURING 1259 WILLOW LAKE BOULEVARD SAINT PAUL, MINNESOTA 55110-5103, USA | ENGINEER: BOB WAHLSTEDT | TI-140 | |
| THIS PRINT IS THE CONFIDENTIAL PROPERTY OF REELL PRECISION MFG. | DRAWN BY: CURT POTTER | | |
| INTERPRET PRINT PER ASME Y14.5M-2009 | THIRD ANGLE PROJECTION  | SCALE: 2:3 | DO NOT SCALE DRAWING |

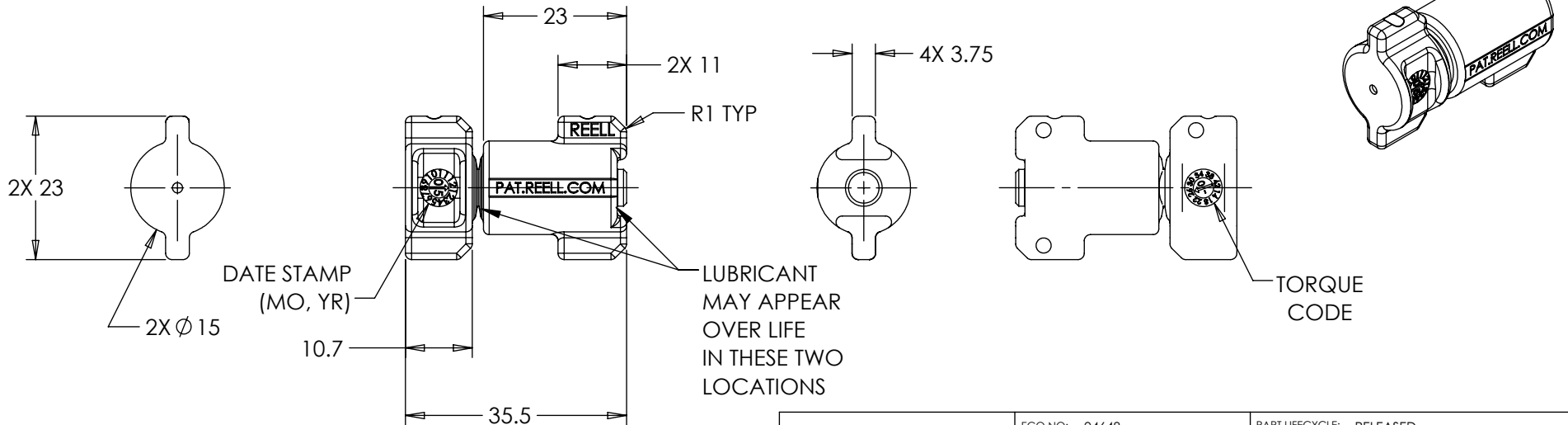
SPECIFICATIONS SUBJECT TO CHANGE

TI -140-X.X-01



TI -140-X.X-02

ORIENTATION MAY VARY



ALL DIMENSIONS REFERENCE
SEE CAD MODEL FOR UNSPECIFIED FEATURES.

SPECIFICATIONS SUBJECT TO CHANGE

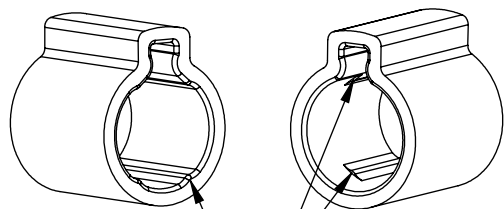
| | | |
|--|--|---|
| <p>REELL PRECISION MANUFACTURING 1259 WILLOW LAKE BOULEVARD SAINT PAUL, MINNESOTA 55110-5103, USA</p> | ECO NO: 04648 | PART LIFECYCLE: RELEASED |
| | APPROVED BY: BOB WAHLSTEDT | DEVELOPMENT CYCLE: PRODUCTION |
| | APPROVED DATE: 11 FEB22 | DESCRIPTION: |
| | PROJECT NO: 0 | SALES DRAWING |
| <p>THIS PRINT IS THE CONFIDENTIAL PROPERTY OF REELL PRECISION MFG.</p> <p>INTERPRET PRINT PER ASME Y14.5M-2009</p> | <p>ENGINEER: BOB WAHLSTEDT</p> <p>DRAWN BY: CURT POTTER</p> <p>THIRD ANGLE PROJECTION </p> <p>DIMENSIONS: mm</p> | <p>PART NO: TI-140</p> <p>REV: P</p> <p>SCALE: 1:1 DO NOT SCALE DRAWING</p> <p>SHEET 3 OF 5</p> |

TI -140-X.X-01

MOUNTING RECOMMENDATION

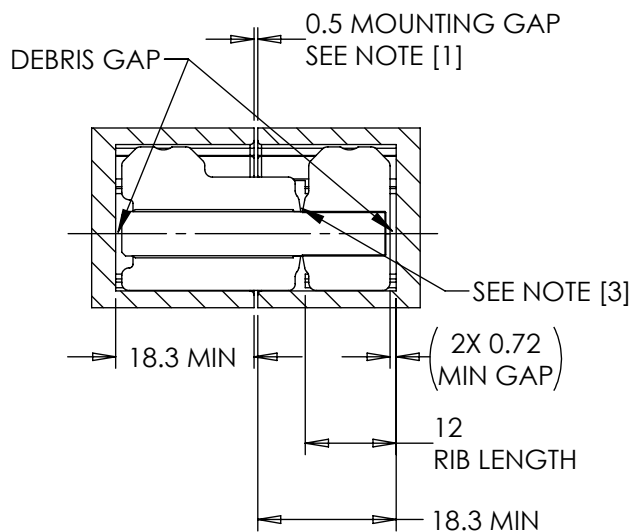
NOTES:

- [1] LOCATE MOUNTING GAP OVER HINGE BODY FOR ADDITIONAL SUPPORT.
- [2] GEOMETRY BETWEEN POINTS E & F CCW MAY VARY IF DESIRED (CUTTER RELIEF).
- [3] INSERT GAP MAY CHANGE DURING INSTALLATION.

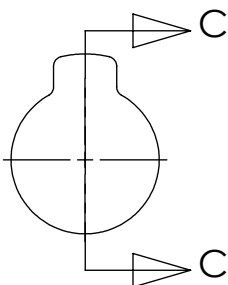


LONG SIDE OF INSERT
ACCEPTS FULL
LENGTH RIBS

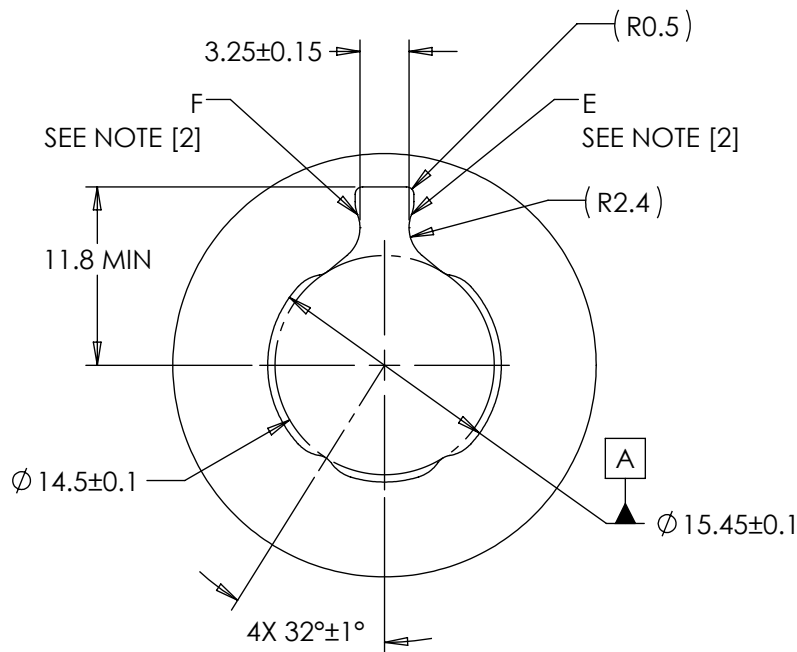
SHORT SIDE OF INSERT
REQUIRES PARTIAL
LENGTH RIBS



SECTION C-C



PRESS FIT PROFILE



SCALE 2:1

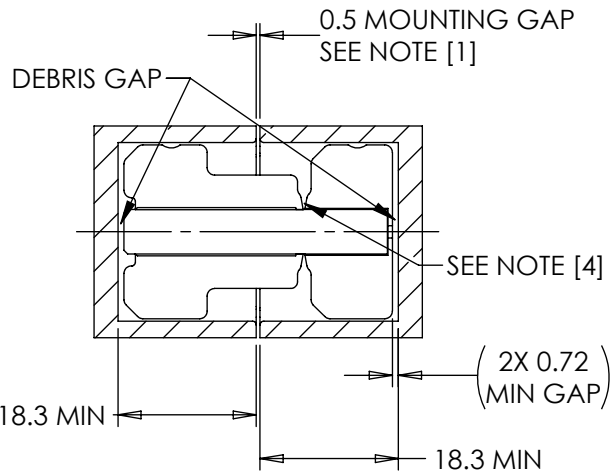
SPECIFICATIONS SUBJECT TO CHANGE

| | | |
|--|----------------------------|--|
| | ECO NO: 04648 | PART LIFECYCLE: RELEASED |
| | APPROVED BY: BOB WAHLSTEDT | DEVELOPMENT CYCLE: PRODUCTION |
| | APPROVED DATE: 11 FEB 22 | DESCRIPTION: |
| | PROJECT NO: 0 | SALES DRAWING |
| ENGINEER: BOB WAHLSTEDT | | |
| REELL PRECISION MANUFACTURING 1259 WILLOW LAKE BOULEVARD SAINT PAUL, MINNESOTA 55110-5103, USA | DRAWN BY: CURT POTTER | PART NO: TI-140 |
| THIS PRINT IS THE CONFIDENTIAL PROPERTY OF REELL PRECISION MFG. | THIRD ANGLE PROJECTION | REV: P |
| INTERPRET PRINT PER ASME Y14.5M-2009 | DIMENSIONS: mm | SCALE: 1:1 DO NOT SCALE DRAWING SHEET 4 OF 5 |

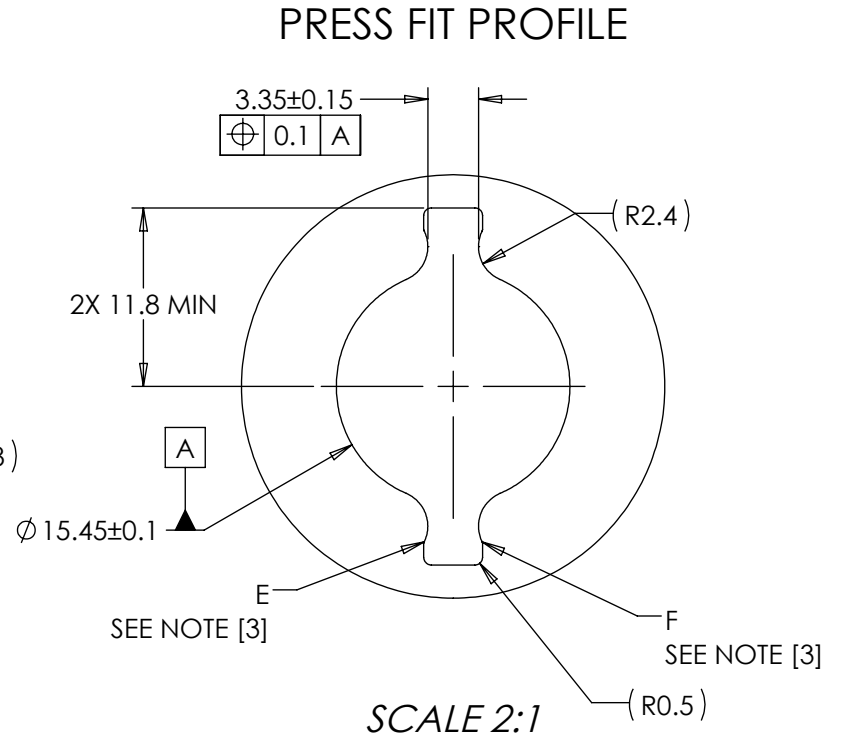
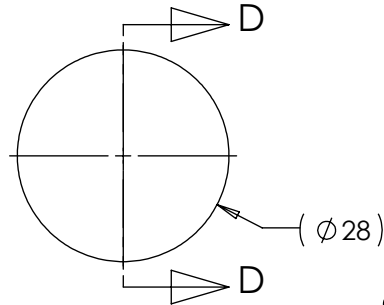
TI -140-X.X-02 MOUNTING RECOMMENDATION

NOTES:

- [1] LOCATE MOUNTING GAP OVER HINGE BODY FOR ADDITIONAL SUPPORT.
- 2. TWO FIN TORQUE INSERTS CAN BE INSERTED EITHER ORIENTATION.
- [3] GEOMETRY BETWEEN POINTS E & F CCW MAY VARY IF DESIRED (CUTTER RELIEF).
- [4] INSERT GAP MAY CHANGE DURING INSTALLATION.



SECTION D-D



SPECIFICATIONS SUBJECT TO CHANGE

| | | |
|--|----------------------------|-------------------------------|
| | ECO NO: 04648 | PART LIFECYCLE: RELEASED |
| | APPROVED BY: BOB WAHLSTEDT | DEVELOPMENT CYCLE: PRODUCTION |
| | APPROVED DATE: 11 FEB22 | DESCRIPTION: |
| | PROJECT NO: 0 | SALES DRAWING |
| REELL PRECISION MANUFACTURING 1259 WILLOW LAKE BOULEVARD SAINT PAUL, MINNESOTA 55110-5103, USA | ENGINEER: BOB WAHLSTEDT | PART NO: TI-140 |
| THIS PRINT IS THE CONFIDENTIAL PROPERTY OF REELL PRECISION MFG. | DRAWN BY: CURT POTTER | |
| INTERPRET PRINT PER ASME Y14.5M-2009 | THIRD ANGLE PROJECTION | SCALE: 1:1 |
| | DIMENSIONS: mm | DO NOT SCALE DRAWING |
| | | SHEET 5 OF 5 |